



Sustainable Innovation and Design

Academic Perspective

Andrew Miller
University of Brighton

21st November 2005



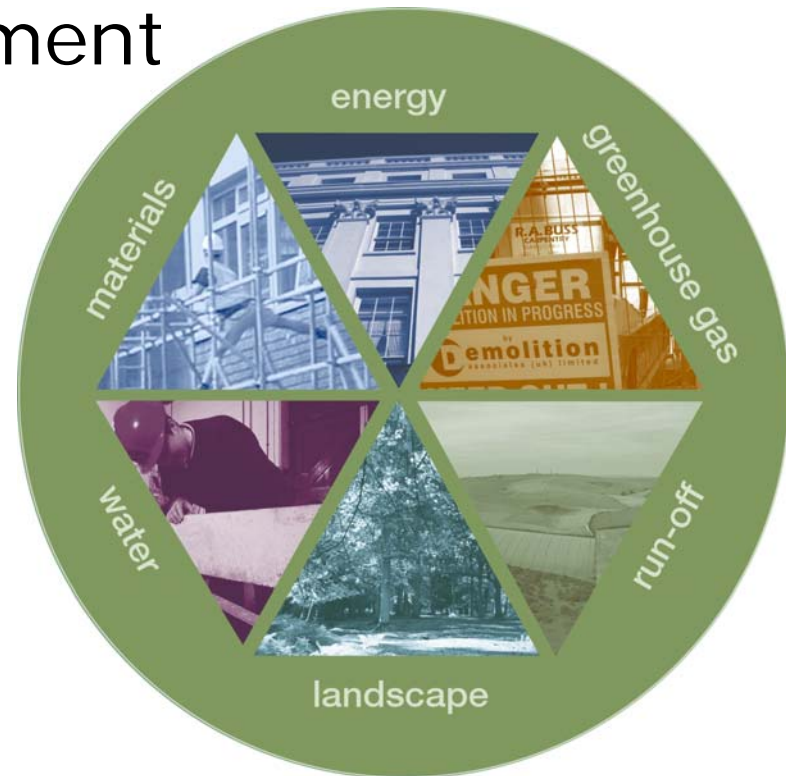
Outline

- Introduction
- Significance of the Built Environment
- Current Activity
- Opportunities



Introduction

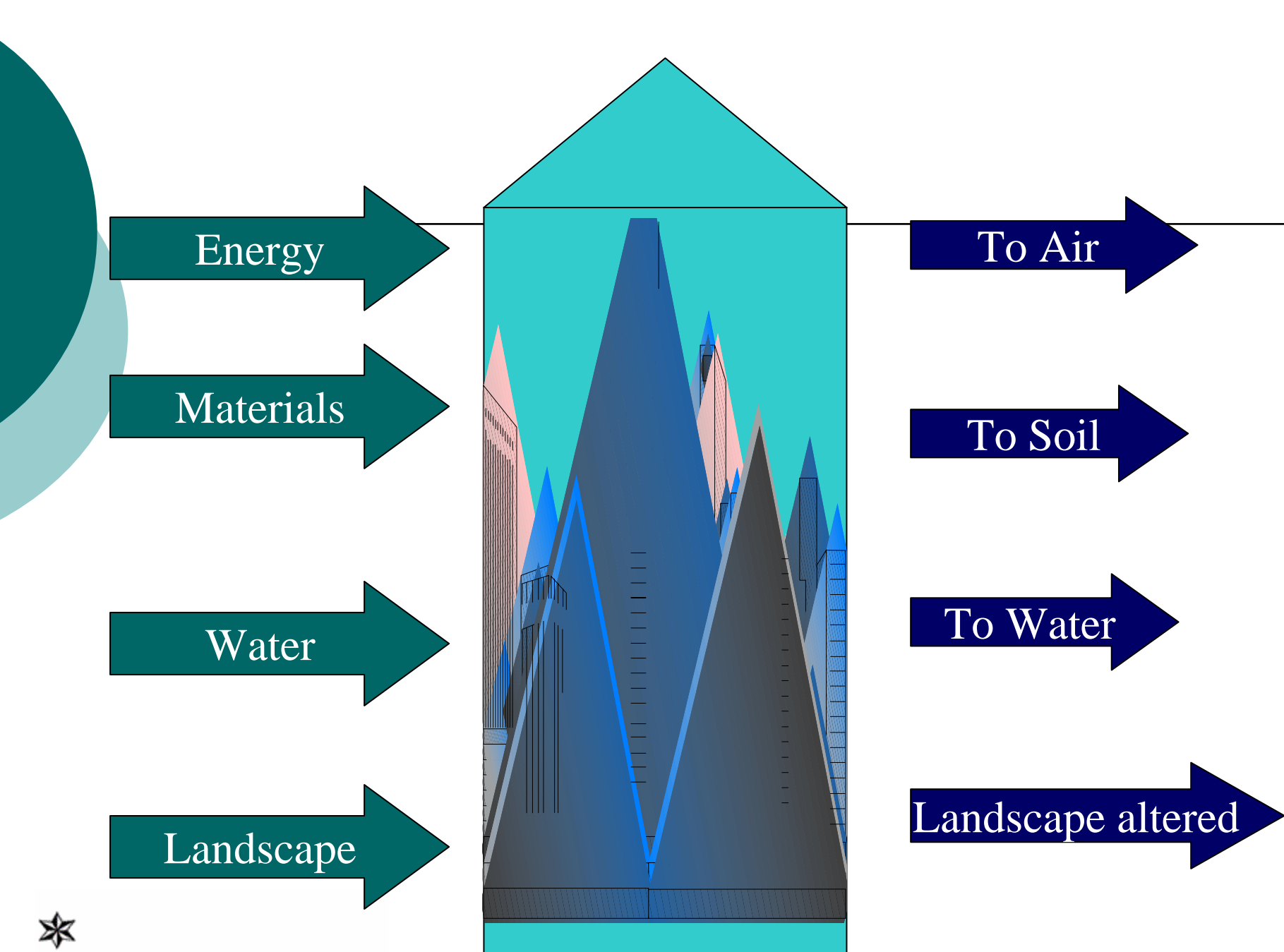
- Centre for Sustainability of the Built Environment
- School of the Environment



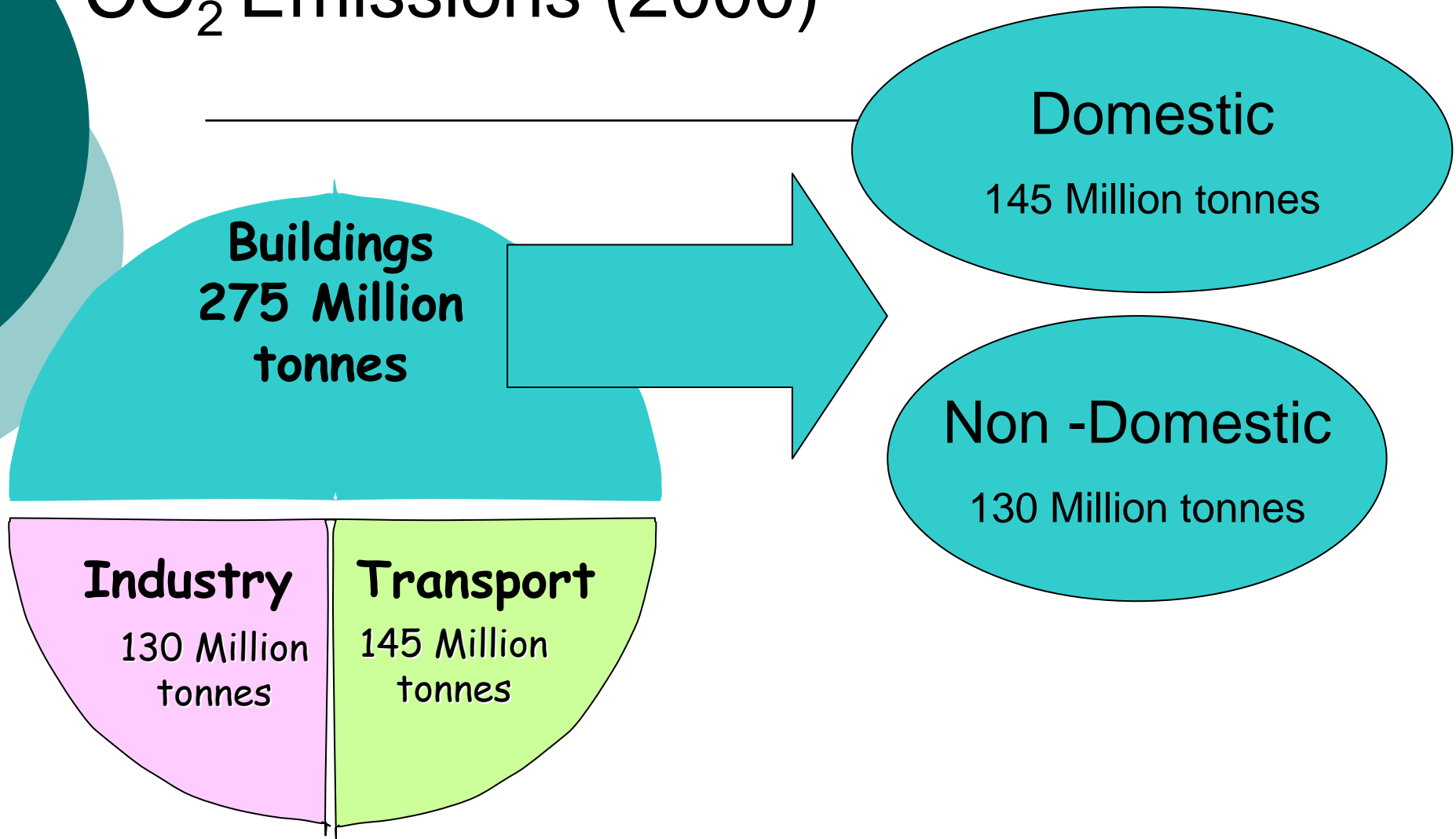
Significance of Built Environment

- Major user of material resources
- Major user of fossil fuels
- Responsible for green house gas emissions
- High construction waste
- High demolition waste

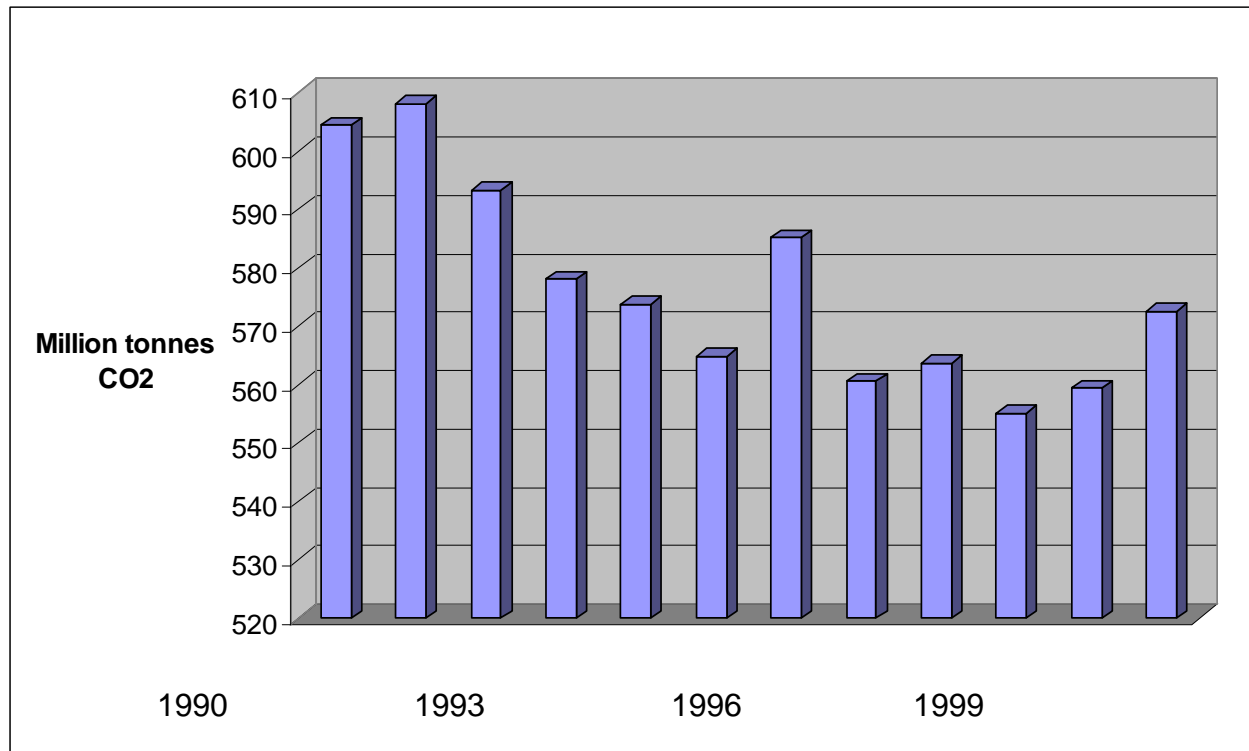




CO₂ Emissions (2000)



Carbon Dioxide Emissions 1990-2001

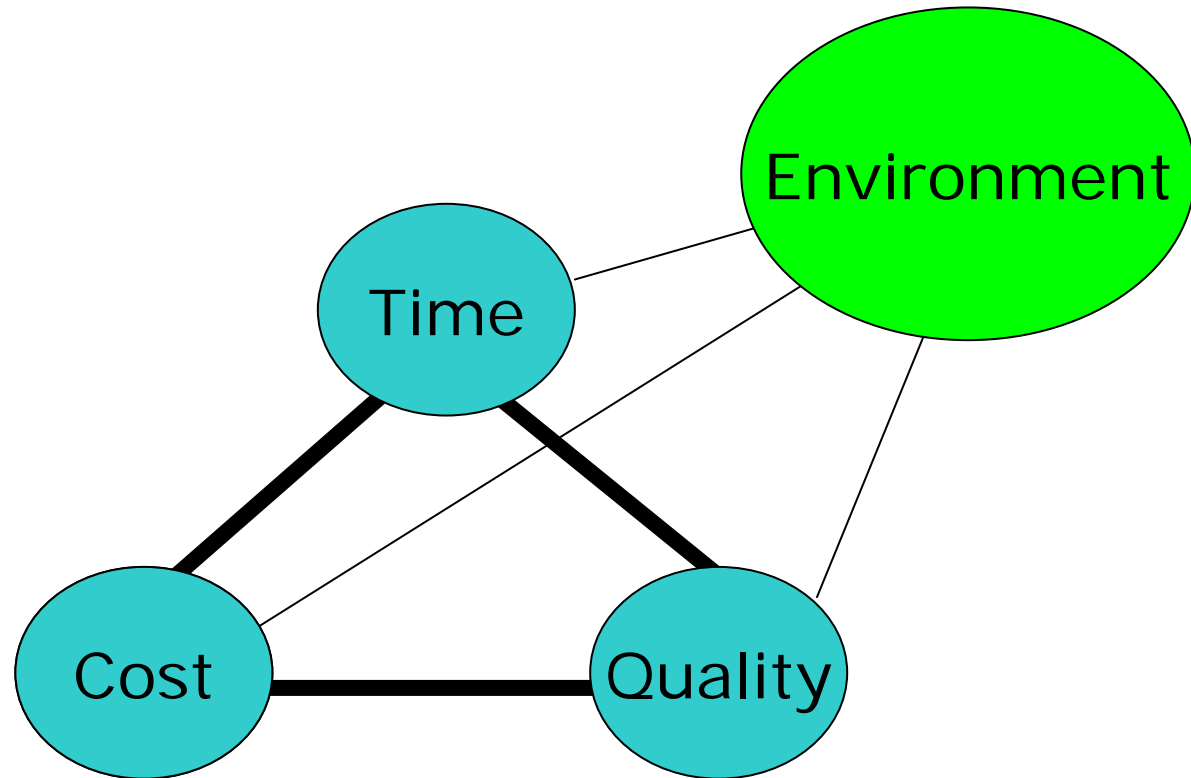


Construction Waste

- 70 million tonnes per annum



Research Direction



Current Activity

- Centre for Sustainability of the Built Environment
- Flavour of undergraduate courses
- Active student union
- Modules
- Research collaboration
- Universities carbon club



LCA – Sustainable Technologies

- What do they cost?
- What do they save?
- What is the real cost?
 - £
 - Carbon Dioxide
 - Cleaning the environment
- Carbonomics!!!!



Opportunities

- Monitoring and Modelling
- Phase change materials
- Sustainable Timber

- Research Collaboration
- Masters Courses
- CPD
- KTP



Centre for Sustainability of the Built Environment

